



The Rock 'n' Roll Shawl

© 2008 Janice Farrell Pea –
Sketched-on-a-Napkin Designs

An Original Pattern for Needleworks, Inc.

<http://www.cu-needleworks.com>



Permission is granted to Needleworks, Inc. to make copies of this pattern available for free or a nominal cost to cover printing. All other individuals are allowed to make one copy for personal use. This pattern may **not** be used commercially and may **not** be copied, transmitted, or distributed electronically without express permission from the author.

As is usually the case with my patterns, the name of the pattern tells a story. This year, I was lucky enough to cross two names off of my list of “rock bands I want to see perform live while they – and I – are still young enough to rock.” In March, I saw Bruce Springsteen and the E Street Band perform in Indianapolis. In September, I saw The Eagles perform in St. Louis. What – you might ask – does any of this have to do with knitting a shawl?

Well, it’s simple really. I cast on this project in the car on the way to Indy and I finished the knitting in the car on the way home from St. Louis. The project languished between the two road trips. Apparently, one must be listening to the CD player cranked up really loud to make progress on this project.

Gauge: 4 sts = 1 inch in garter stitch

Materials

Yarn: Filatura di Crosa *Multicolor* (60% mohair, 40% acrylic), 5 50-gram balls (198 yards each) or 1,000 yards of similar yarn (multicolored with long runs of color). The color used in the model is #4100.

Note: There was very little yarn left over — less than 10 yards. Consider spit-splicing to avoid waste. You will also have fewer tails to weave in.

Needles: 24 inch US size 9 circular needle
40 inch US size 9 circular needle
size 10.5 needle for binding off

Notions: stitch marker

Abbreviations **BO** = Bind Off; **CO** = Cast On; **K** = Knit; **K2tog** = Decrease by knitting two stitches together; **M1** = Make one increase; **MM** = Move Marker; **P** = Purl; **PM** = Place Marker; **RS** = Right Side; **Sl** = Slip stitch (purlwise, unless otherwise noted, i.e. working an SSK); **SK2P** = Decrease two stitches by slipping first stitch, knitting two stitches together, and passing slipped stitch over; **SSK** = Decrease by slipping two stitches, individually, knitwise and then knitting them together through the back loop; **ST/STS** = Stitch/Stitches; **WS** = Wrong Side.

Instructions

The shawl is constructed of 6 squares, 4 triangles, and a border. The “wingspan” of the finished shawl is 68”, and the depth from the neckline to the point is 34”. To make a larger shawl, increase the number of stitches cast on by a multiple of 4. To make it smaller, decrease the number of stitches cast on by a multiple of 4.

Square Pattern

Row 1: (WS) and all odd numbered rows:

K to 1 st before marker, P1, MM, K to end.

Row 2: (RS) and all even numbered rows:

K to 2 sts before marker, SSK, MM, Sl1, K2tog,
K to end.

Repeat these two rows until ready for a RS row where 3 sts remain: SK2P. Do not break the yarn – pull the ball through the stitch and tighten.

Triangle Pattern

Row 1: (WS) and all odd numbered rows:

K to 1 st before marker, P1, MM, K to end.

Row 2: (RS) and all even numbered rows:

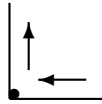
K1, SSK, K to 2 sts before marker, SSK, MM,
Sl1, K2tog, K to 3 sts before end, K2tog, K1.

Repeat these two rows until ready for a RS row where 3 sts remain: SK2P. Do break the yarn – pull tail through remaining stitch and tighten.

Step 1: Work Square 1 (S1)

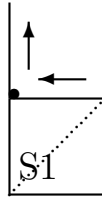
CO 46 sts, PM, CO 47 sts [total of 93 sts]. *Note:* Use the long-tail cast-on for this square and leave a tail sufficiently long to cast on 150 additional stitches. You will use this tail to cast on stitches for the second and third squares.

Work the Square pattern instructions above. The diagram indicates the direction of knitting for the cast-on and even numbered rows. The dot indicates the placement of the marker.



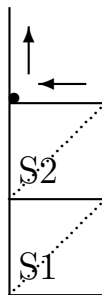
Step 2: Work Square 2 (S2)

Continuing with yarn from square 1 and with RS facing, pick up and knit 46 sts along edge of square 1, PM, CO 47 sts (using long tail left from casting on square 1). Work the square pattern instructions above.



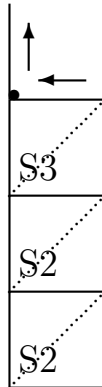
Step 3: Square 3 (S3)

Continuing with yarn from square 2 and with RS facing, pick up and knit 46 sts along edge of square 2, PM, CO 47 sts (using long tail left from casting on earlier squares). Work the square pattern instructions above.



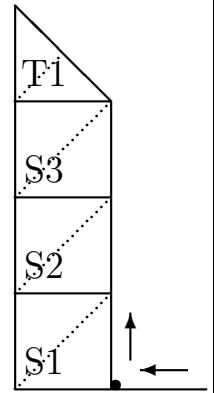
Step 4: Triangle 1 (T1)

Continuing with yarn from square 3 and with RS facing, pick up and knit 46 sts along edge of square 3, PM, CO 47 sts (using long tail left from casting on earlier squares). Work the triangle pattern instructions above.



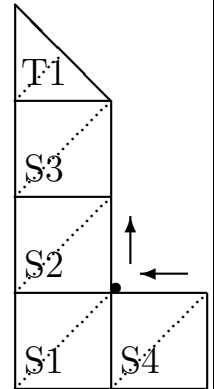
Step 5: Square 4 (S4)

CO 46 sts, PM, with RS facing, pick up and knit 47 sts along edge of square 1. Work the square pattern instructions above.



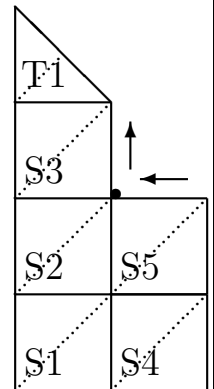
Step 6: Square 5 (S5)

Continue with yarn from square 4 and with RS facing, pick up and knit 46 sts along edge of square 4, PM, pick up and knit 1 st from corner of square 1 (this is the previously slipped st), and pick up and knit 46 sts from edge of square 2. Work the square pattern instructions above.



Step 7: Triangle 2 (T2)

Continue with yarn from square 5 and with RS facing, pick up and knit 46 sts along edge of square 5, PM, pick up and knit 1 st from corner of square 2 (this is the previously slipped st), and pick up and knit 46 sts from edge of square 3. Work the triangle pattern instructions above.



Step 8: Square 6 (S6)

CO 46 sts, PM, with RS facing, pick up and knit 47 sts along edge of square 4. Work the square pattern instructions above.

Step 9: Triangle 3 (T3)

CO 46 sts, PM, with RS facing, pick up and knit 47 sts along edge of square 4. Work the triangle pattern instructions above.

Step 10: Triangle 4 (T4)

CO 46 sts, PM, with RS facing, pick up and knit 47 sts along edge of square 6. Work the triangle pattern instructions above.

Step 11: Border 1

With RS facing and beginning at outside corner of triangle 1, pick up and knit 1 st in each CO st (188 sts total), PM, pick up and knit 1 st in point of shawl, pick up and knit 188 additional sts.

WS Rows 1, 3, & 5: K.

RS rows 2 & 4: K1, M1, K to marker, M1, MM, S11, M1, K to last st, M1, K1.

BO loosely with larger needle. Do not break yarn.

Step 12: Border 2

Continue with same yarn, with RS facing and beginning at outside corner of triangle 4, pick up and knit 1 st in each st along top edge of shawl (188 sts total).

WS Rows 1, 3, & 5: K.

RS rows 2 & 4: K1, M1, K to last st, M1, K1.

BO loosely with larger needle.

Weave in ends and block gently if desired.